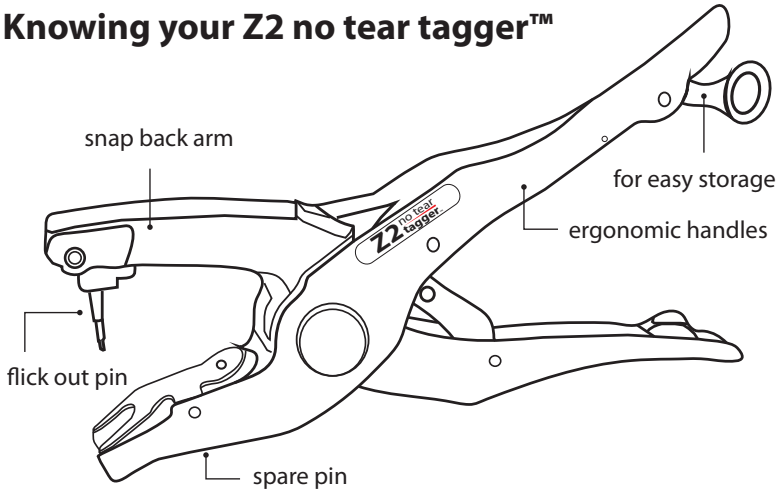


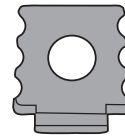
Follow these steps when applying Pedigree tags



Knowing your Z2 no tear tagger™



Pedigree tags



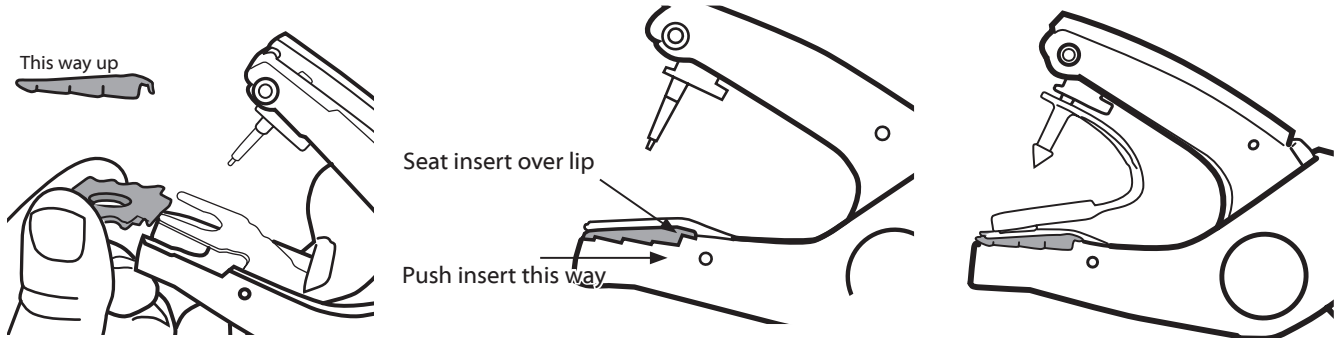
Pedigree insert

NOTE:

You need an insert to apply Pedigree tags. You are only required to place the insert in the Z2 no tear tagger™ one single time before loading the first Pedigree tag to be applied.

The insert has the function to ensure the Pedigree tag is loaded in the right position, and to perfectly align the male and female portion of the tag during application. For your convenience, you will find a Pedigree insert with each order of Pedigree tags.

Applying Pedigree tags



1 Depress the metal clamp holder and place the Pedigree Insert under the clamp.

2 Push the Pedigree Insert up until it is seated over the lip which secures it in position.

3 Position the tag in the Z2 no tear tagger™ as shown. Now the tag is ready to apply.

Pedigree tags in sheep

Position the tag in the ear as shown. for best retention apply rfid pedigree tags to the front of the ear.



Pedigree tags in calves

For best retention the male portion of the tag should be applied to the top of the ear. Make sure to leave a gap between the tag and the ear, for the ear to grow.

